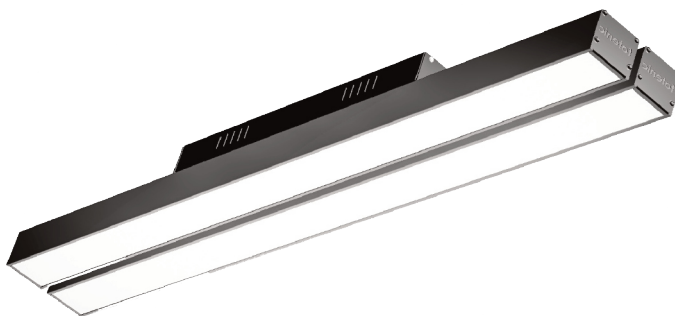


# Rack bay

Rack-space champ,  
Very low running cost  
and very low glare



## Standard Specification

Input power range:	75 - 300W
Standard power:	75W, 150W, 200W, 300W
Efficacy (75W):	> 123 lm/W
Efficacy (150W-300W):	> 128 lm/W
Efficacy (75W DALI-2):	>120 lm/W
Efficacy (150-300W DALI-2):	>125 lm/W
Beam angle:	100° symmetrical
CRI:	>82
Colour temperature:	Cool white, 5000K Neutral white, 4000K
SDCM:	3

UGR:	12<20
LLD(Av):	2.21% @ 12,000 hrs
Diffuser:	PMMA
Chromaticity shift (Av):	0.0012 @ 12,000 hrs
Fitting Material:	anodised aluminium
Fitting colour:	metallic
IP rating:	IP40
Input Voltage:	180-264Vac
Power factor:	>0.95@20W
Operating temperature:	-20°C to 45°C
Approved standards:	SAA, C-Tick
Life expectancy (L70):	>100,000 hrs (Calc) >72,000 hrs (Reported)
Luminaire warranty (L90):	7 yrs including driver
Weight:	1 channel 3.5kg 2 channels 6.5kg 3 channels 8.5kg

## Options

DALI-2 driver:	HLG100H (75W) HLG185 (150W) HLG240 (200W ) HLG320 (300W )
Custom colour:	Yes
Lighting control system:	DALI-2 wired LoRa i3t

LoRa Lighting control:	Ambient light correction Room correction factor Occupancy sensing Multi-level Grouping Group dimming Predictive control
OEM integration:	BacNet, KNX, Modbus, S-Mode, Desigo, Zen Control, Cognian Synchromesh

## Ordering Information

Note: New part number, all else unchanged

HLRab-c de-fg-h

a:	Luminaire Wattage.e.g. HLR <b>200</b> ... = 200W
b:	<b>S</b> -Standard driver, <b>D</b> -DALI-2 driver,
c:	<b>C</b> ool white, <b>N</b> eutral white, <b>T</b> unable
d:	<b>1</b> (1 channel), <b>2</b> (2 channels) <b>3</b> (3 channels), <b>4</b> (4 channels) <b>5-9</b> (reserved for future use)

e:	<b>1</b> (555mm), <b>2</b> (1100mm), <b>3-9</b> (reserve for future)
f:	Lora i3t, <b>Blank</b> (no LoRa)
g:	<b>PIR</b> , <b>Microwave</b> , <b>Blank</b> (no sensor)
h:	<b>IPxx</b> <b>Blank</b> (IP42)

## Dimensions

