

Downlights

Contemporary

Athena

Recessed low-glare downlight, excellent heat dissipation, long life.



Selena

Recessed low-glare downlight, excellent heat dissipation, long life., swivel



Luna

Recessed low-glare downlight, excellent heat dissipation, long life.



Traditional

Halo

Low glare, high efficacy and long life.



Eos

Low glare, high efficacy and long life.



Athena

Where aesthetics are important.

Recess low glare downlight with high heat dissipation for longer life.



Standard Specification

Input power range*:	12W, 20W, 30W
Efficacy (DALI-2):	83 lm/W @ 12W * 102 lm/W @ 20W * 103 lm/W @ 30W *
Flicker-free driver (DALI-2):	BK-PUL018A-0450Ad (12W) BK-PUL030A-0700Ad (20W, 30W)
Beam angle:	15°, 24° 38°, 60° symmetrical
CRI:	>90 (R8),
Colour temperature:	Cool white, 5000K Neutral white, 4000K Warm white, 3000K
SDCM:	3
UGR:	10<19
LLD(Av):	2.21% @ 12,000 hrs
Lense:	PPMA
Chromaticity shift (Av):	0.0012 @ 12,000 hrs
Fitting Material:	pressed aluminium
elFitting colour:	USA white
IP rating:	IP54
Input Voltage:	180-264Vac
Power factor:	>0.95@20W
Operating temperature:	-20°C to 45°C
Approved standards:	SAA, C-Tick
Life expectancy (L70):	>100,000 hrs (Calc) >60,000 hrs ((Reported)

Luminaire warranty (L80): 5 yrs including driver

Weight: see * below

Options

Lighting control system: DALI-2 wired
LoRa i3t

LoRa i3t Lighting control:

64,000 Lamp and device Nodes
Easy setup:
Simple point-n-click conventional zoning
with optional multi-level grouping
0-100% zone or group dimming
Ambient light correction
Room correction factor
Occupancy sensing
Predictive control

Custom colour: Yes

Custom Dimensions: Yes

OEM integration: BacNet, KNX, Modbus,
S-Mode, Desigo,
Zen Control,
Cognian Synchromesh

* 12W cut out 90mm (250 gm) , 125mm (350 gm)
20W cut out 125mm (350 gm),
30W cut out 145mm, (450 gm)

Ordering Information

Note: New part number, all else unchanged

DLAab-cd-ef-g

a: Luminaire Wattage. e.g. DLR20... = 20W

b: Standard driver, DALI-2 driver, Tunable driver

c: Cool white, Neutral white, Tunable

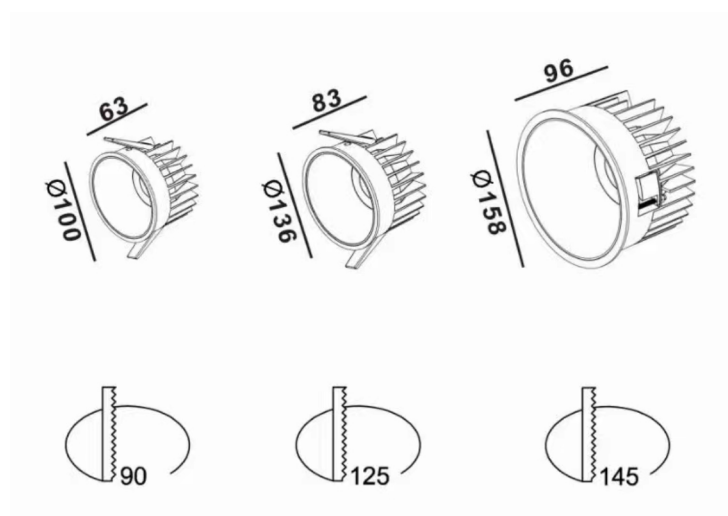
d: 1 (90mm), 2 (125mm), 3 (145mm),

e: Lora i3t, Blank (no LoRa)

f: PIR,
Microwave,
Combine PIR, Abient and Daylight sensors
Blank (no sensor)
Sensors are external from fitting.

g: IPxx,
Blank (54)

Dimensions



Control gear

DALI-2 Module



I3t LoRa remote Node LRNS



Selena

Where aesthetics are important.

Gimbal recess low glare downlight with high heat dissipation for longer life.



Standard Specification

Input power range*:	10W, 20W
Efficacy (DALI-2):	83 lm/W @ 12W * 102 lm/W @ 20W * 103 lm/W @ 30W *
Flicker-free driver (DALI-2):	BK-PUL018A-0450Ad (12W) BK-PUL030A-0700Ad (20W, 30W)
Beam angle:	15°, 24°, 38° symmetrical
CRI:	>90 (R8),
Colour temperature:	Cool white, 5000K Neutral white, 4000K Warm white, 3000K
SDCM:	3
UGR:	10<19
LLD(Av):	2.21% @ 12,000 hrs
Lense:	PPMA
Chromaticity shift (Av):	0.0012 @ 12,000 hrs
Fitting Material:	pressed aluminium
Fitting colour:	USA white
IP rating:	IP54
Input Voltage:	180-264Vac
Power factor:	>0.95@20W
Operating temperature:	-20°C to 45°C
Approved standards:	SAA, C-Tick
Life expectancy (L70):	>100,000 hrs (Calc) >60,000 hrs ((Reported)
Luminaire warranty (L80):	5 yrs including driver

Weight:

see * below

Options

Lighting control system:	DALI-2 wired LoRa i3t
LoRa i3t Lighting control:	64,000 Lamp and device Nodes Easy setup: Simple point-n-click conventional zoning with optional multi-level grouping 0-100% zone or group dimming Ambient light correction Room correction factor Occupancy sensing Predictive control
Custom colour:	Yes
Custom Dimensions:	Yes
OEM integration:	BacNet, KNX, Modbus, S-Mode, Desigo, Zen Control, Cognian Synchromesh
* 10W cut out 75mm (250 gm) , 10W or 20W cut out 100mm (350 gm)	

Ordering Information

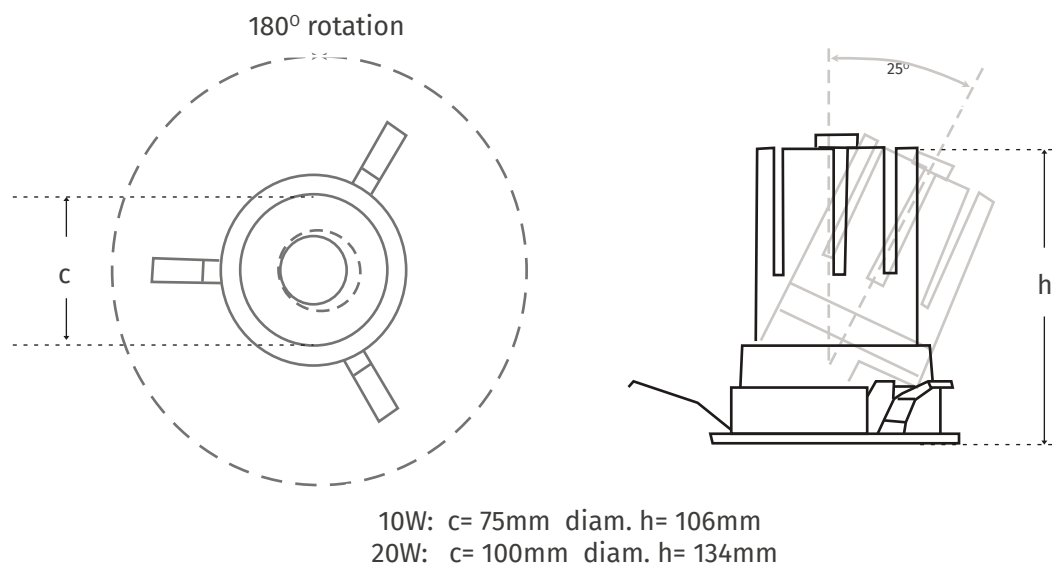
Note: New part number, all else unchanged

DLSab-cd-ef-g

a:	Luminaire Wattage.	e.g. DLS20... = 20W
b:	Standard driver, DALI-2 driver, Tunable driver	
c:	Cool white, Neutral white, Tunable	

d:	1 (75mm), 2 (100mm),
e:	Lora i3t, Blank (no LoRa)
f:	PIR, Microwave, Combine PIR, Abient and Daylight sensors Blank (no sensor). Sensors are external from fitting.
g:	IPxx, Blank (54)

Dimensions



Control gear

DALI-2 Module



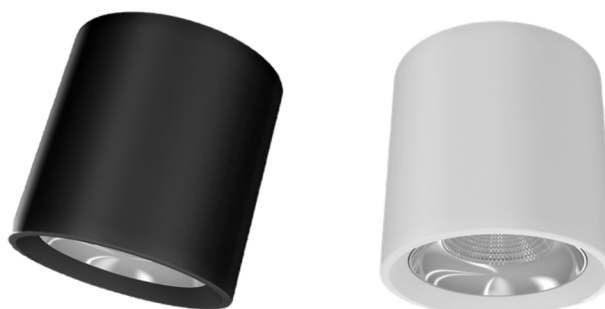
I3t LoRa remote Node LRNS



Luna

Where aesthetic is important.

Recess low glare downlight with high heat dissipation for longer life.



Standard Specification

Input power range*:	12W, 20W, 30W
Efficacy (DALI-2):	82 lm/W @ 12W * 83 lm/W @ 20W * 85 lm/W @ 30W *
Driver (DALI-2):	BK-PUL018A-0450Ad (12W) BK-PUL030A-0700Ad (20W, 30W)
Beam angle:	60°symmetrical
CRI:	>90 (R8),
Colour temperature:	Cool white, 5000K Neutral white, 4000K Warm white, 3000K
SDCM:	3
UGR:	10<19
LLD(Av):	2.21% @ 12,000 hrs
Lense:	PPMA
Chromaticity shift (Av):	0.0012 @ 12,000 hrs
Fitting Material:	Zinc coated steel
Fitting colour:	Matt Black, USA white
IP rating:	IP54
Input Voltage:	180-264Vac
Power factor:	>0.95@20W
Operating temperature:	-20°C to 45°C
Approved standards:	SAA, C-Tick
Life expectancy (L70):	>100,000 hrs (Calc) >60,000 hrs ((Reported)

Luminaire warranty (L80): 7yrs including driver
Weight: see * below

Options

Lighting control system: DALI-2 wired
LoRa i3t

LoRa i3t Lighting control:
64,000 Lamp and device Nodes
Easy setup:
Simple point-n-click conventional zoning
with optional multi-level grouping
0-100% zone or group dimming
Ambient light correction
Room correction factor
Occupancy sensing
Predictive control

Custom colour: Yes

OEM integration: BacNet, KNX, Modbus,
S-Mode, Desigo,
Zen Control,
Cognian Synchromesh

* 12W diameter 110mm, 130mm , 145mm
20W diameter 130mm , 145mm
30W diameter 145mm,
110mm (300 gm), 130mm (350gm), 145 mm (450 gm)

Ordering Information

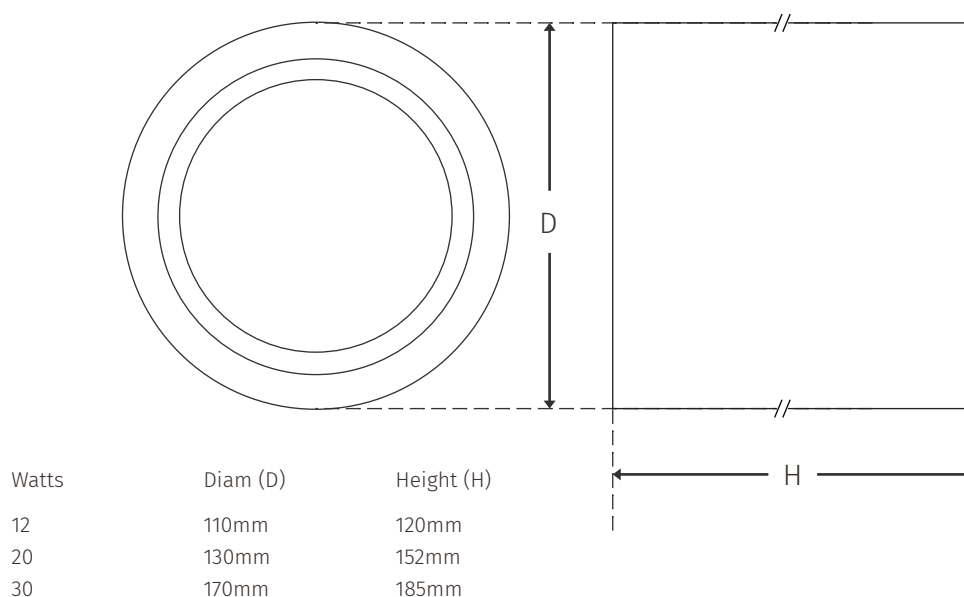
Note: New part number, all else unchanged

DLLab-cd-ef-g

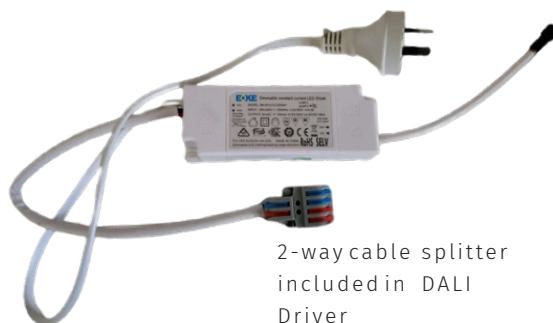
a:	Luminaire Wattage.	e.g. DLR20... = 20W
b:	Standard driver, DALI-2 driver, Tunable driver	
c:	Cool white, Neutral white, Tunable	

d:	1 (110mm), 2 (130mm), 3 (145mm), cut-out diam. 4-9 (reserved for future use)
e:	Lora i3t, Blank (no LoRa)
f:	PIR, Microwave, Combine PIR, Abient and Daylight sensors Blank (no sensor)
g:	IPxx, Blank (54)

Dimensions



DALI-2 Module



I3t LoRa remote Node LRNS



Halo

Large diffused downlights



Standard Specification

Input power range:	12W, 20W*
Efficacy (DALI-2):	115 lm/W @ 12W 118 lm/W @ 20W
Driver (DALI-2):	BK-PUL018A-0450Ad
Beam angle:	90°symmetrical
CRI:	>83
Colour temperature:	Cool white, 5000K Neutral white, 4000K Tunable, 2700-5500K
SDCM:	3
UGR:	10<18
LLD(Av):	2.21% @ 12,000 hrs
Diffuser:	Polycarbonate
Chromaticity shift (Av):	0.0012 @ 12,000 hrs
Fitting Material:	Zinc coated steel
Fitting colour:	USA white
IP rating:	IP42
Input Voltage:	180-264Vac
Power factor:	>0.95@20W
Operating temperature:	-20°C to 45°C
Approved standards:	SAA, C-Tick
Life expectancy (L70):	>150,000 hrs (Calc) >60,000 hrs ((Reported)
Luminaire warranty (L80):	7yrs including driver
Weight:	0.8 kg

Options

Lighting control system:	DALI-2 wired LoRa i3t
LoRa i3t Lighting control:	64,000 Lamp and device Nodes Easy setup: Simple point-n-click conventional zoning with optional multi-level grouping 0-100% zone or group dimming Ambient light correction Room correction factor Occupancy sensing Predictive control
DALI-2 driver:	BK-PUL018A-0450Ad
Custom colour:	Yes
Custom Dimensions:	Yes
OEM integration:	BacNet, KNX, Modbus, S-Mode, Desigo, Zen Control, Cognian Synchromesh

Ordering Information

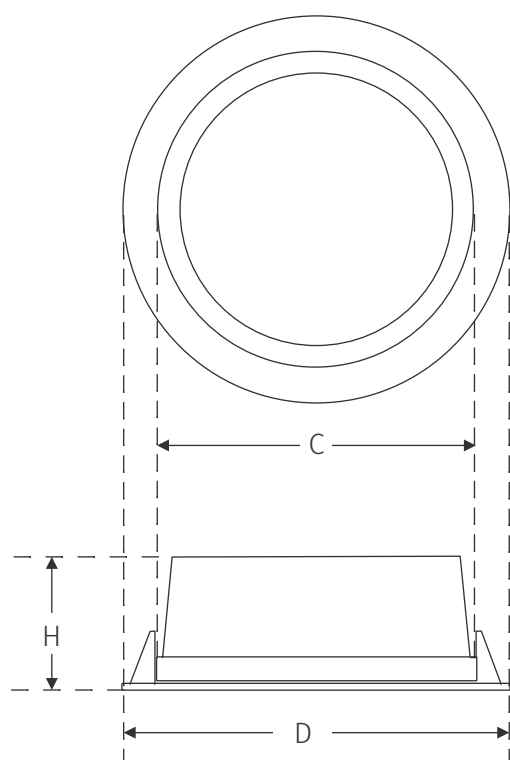
Note: New part number, all else unchanged

DLHab-cd-ef-g

a:	Luminaire Wattage.	e.g. DLH20... = 20W
b:	Standard driver, DALI-2 driver, Tunable driver	
c:	Cool white, Neutral white, Tunable	

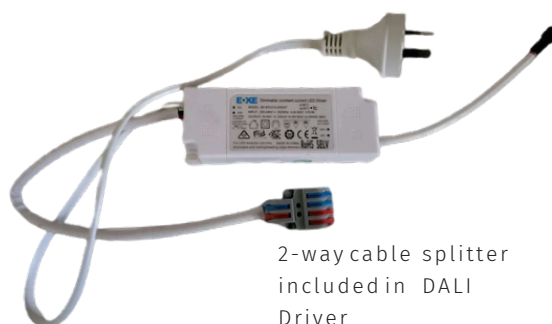
d:	1 (145mm), 2 (200mm), cut-out diam. 3-9 (reserved for future use)
e:	Lora i3t, Blank (no LoRa)
f:	PIR, Microwave, Combine PIR, Abient and Daylight sensors Blank (no sensor)
g:	IPxx, Blank (no IP)

Dimensions



Cut-Out (C)	Diam (D)	Height (H)	Watts (Max)
145mm	158mm	60mm	20W
200mm	230mm	80mm	25W

DALI-2 Module



2-way cable splitter
included in DALI
Driver

I3t LoRa remote Node LRNS



Eos

90mm Cut-out Downlights



Standard Specification

Input power:	5W - 10W
Efflcacy (standard driver):	86 lm/W @ 10W 80 lm/W @ 5W
Efflcacy (DALI-2 driver):	80 lm/W @ 10W 78 lm/W @ 5W
Beam angle:	96°symmetrical
CRI:	>90
Colour temperature:	Cool white, 5000K Neutral white, 4000K Warm white 3000
SDCM:	3
UGR:	10<18
LLD(Av):	2.21% @ 12,000hrs

Diffuser:	Polycarbonate
Chromaticity shift (Av):	0.0012 @ 12,000 hrs
Fitting Material:	Zinc coated steel
Fitting colour:	USA white
IP rating:	IP40 or 65
Input Voltage:	180-264Vac
Power factor:	>0.92@20W
Operating temperature:	-20°C to 45°C
Approved standards:	SAA, C-Tick
Life expectancy (L70):	>100,000 hrs (Calc) >72,000 hrs (Reported)
Luminaire warranty (L90):	5 yrs standard driver 7 yrs DALI-2 driver
Weight:	0.5 kg

Options

Standard driver:	BK-PUL010A-0250AP
DALI-2 driver:	DL10-BK
Custom colour:	Yes
Custom Dimensions:	Yes
Lighting control system:	DALI-2 wired LoRa i3t

LoRa Lighting control:	Ambient light correction Room correction factor Occupancy sensing Multi-level Grouping Group dimming Predictive control
OEM integration:	BacNet, KNX, Modbus, S-Mode, Desigo, Zen Control, Cognian Synchromesh

Ordering Information

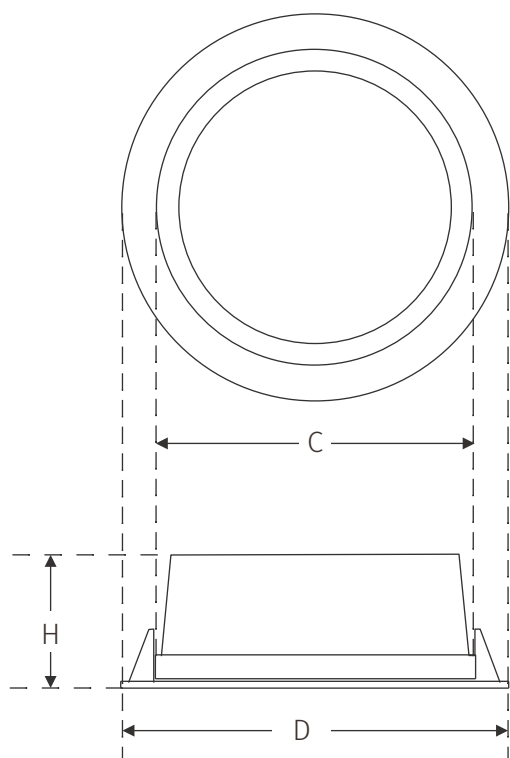
Note: New part number, all else unchanged

DLEab-cd-ef-g

a:	Luminaire Wattage.e.g. DLE 20 ... = 20W
b:	Standard driver, D ALI-2 driver, T unable driver
c:	Cool white, N eutral white, T unable

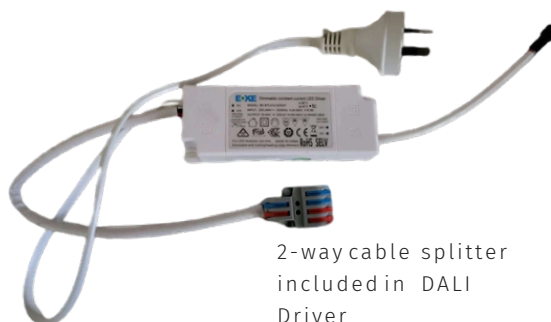
d:	1 (75mm), 2 (90mm), cut-out diam. 3-9 (reserved for future use)
e:	Lora i3t, B lank (no LoRa)
f:	P IR, M icrowave, Combine PIR, Abient and Daylight sensors B lank (no sensor)
g:	I Pxx, Blank (no IP)

Dimensions



Cut-Out (C)	Diam (D)	Height (H)	Watts (Max)
75mm	95mm	60mm	5 W
90mm 110mm	60mm 8W		

DALI-2 Module



2-way cable splitter
included in DALI
Driver

I3t LoRa remote Node LRNS

