

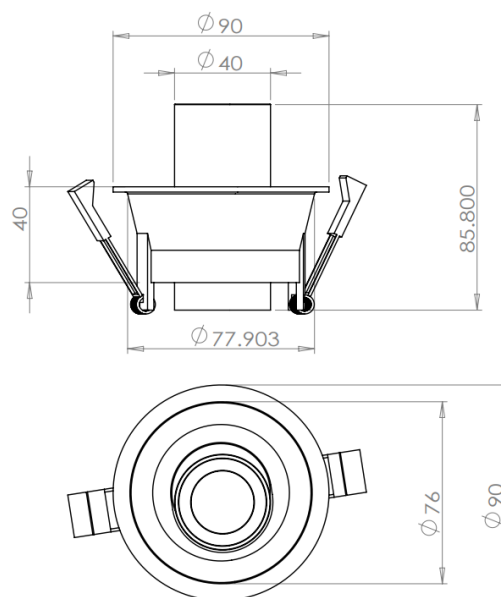
### At a Glance:

- <13W
- DALI-2 Compatible
- CRI 90
- Ultra-Low Glare (UGR <13)
- Black/Gold or White/Gold
- Flicker-Free Lighting
- Enhances Greenstar Rating
- Long Lifespan: >60K hours
- Meets IES LM-80-08 Standard
- 5 Year Warranty
- Standard Driver Option



DINA-I 0-45° vertically rotated spotlight is a modern and stylish lighting fixture that is perfect for any home or office. With its sleek and elegant design, this spotlight will add a touch of sophistication to any room. The spotlight is also versatile, with a 0-45° degree

rotation that allows you to direct the light effectively onto areas that need attention. Whether you're looking to highlight a piece of artwork or create a warm and inviting atmosphere, the DINA-I is the perfect choice.



Note:  
140mm option

## DINA-I

### Specification:

Input power: <13W  
Efficacy: 83 lm/W  
UGR: <13  
Beam angles: 20°, 30°, 40°, 50° symmetrical  
CRI: Ra > 90 (R9 > 50)  
Color temperature: Cool, 5000K; Neutral, 4000K;  
Warm, 3000K; Amber, 2700K  
SCDM: 2  
LLD(Av): 2.21% @ 12,000 hrs  
Lens: PMMA, Clear, Diffuse, Linear, Honeycomb  
Chromaticity shift (Av): 0.0012 @ 12,000 hrs  
Fitting Material: Aluminium  
Fitting color: Powder coated white/gold,  
black/gold, custom colour  
IP rating: IP40  
Input Voltage: 200-240Vac  
Power factor: >0.92 @ 20W  
Operating temperature: -20°C to 45°C  
Approved standards: SAA, C-Tick  
Life expectancy (L70): >60,000 hrs  
Warranty: 5 years  
Weight: <0.5 kg

DALI-2 Driver: BK-PUL018A-0450A Flicker free  
Standard Driver: BK-DGL042-1050AD Flicker free

### Lighting Control Hardware:

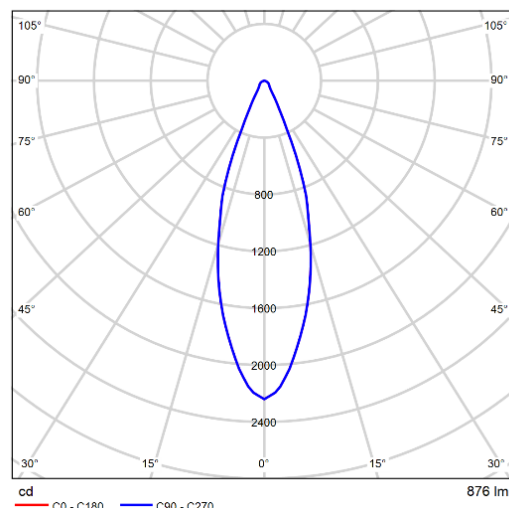
Wired or wireless DALI-2  
Wireless LoRa with i3t Smart App  
Wireless range: 5km  
Hierarchical Zone layers: 5  
Groups per Zone: 255  
Number of gateway: 1 (typical)  
Point-n-click Zone-Group configuration  
Ambient light correction

### i3t and/or FunGlow system:

Zone-Group dimming  
Scene setting  
Occupancy sensing  
Daylight tracking: 2700-5500K  
Access and Security Control  
Emergency Light monitoring  
RGB/CW daily setting (FunGlow)  
Battery operation (LoRa)  
Long-range data acquisition control (< 50 km)

### DINA-I: DLDIab-cdefg

a: Watts (e.g., DLDI08... = 8W)  
b: **D**ALI, **S**tandard  
c: **C**ool, **N**eutral, **W**arm, **A**mber  
d: **1**=20°, **2**=30°, **3**=40°, **4**=50° beam angle  
e: **L**oRa i3t, **F**unGlow, **B**lank  
f: **W**hite/gold, **B**lack/gold  
g: **C**lear, **D**iffused, **L**inear, **H**oneycomb



## DALI Configuration:



## DALI -LoRa Configuration:

